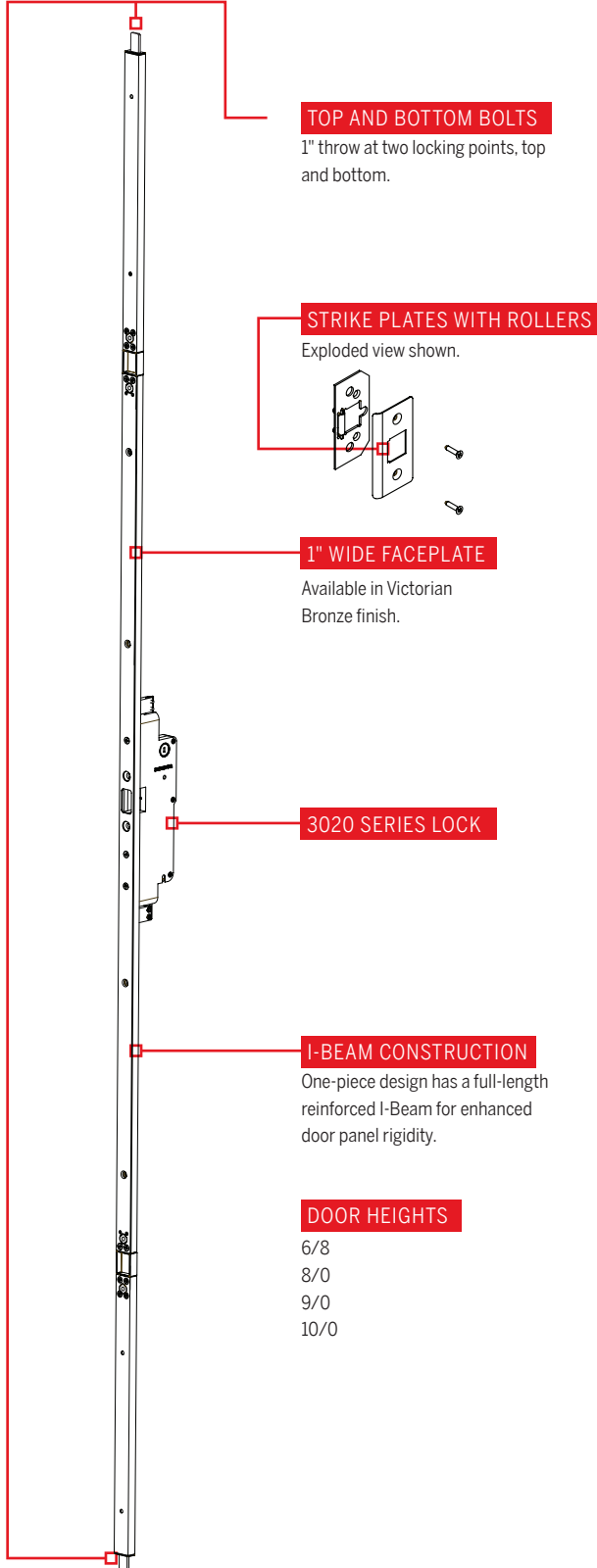
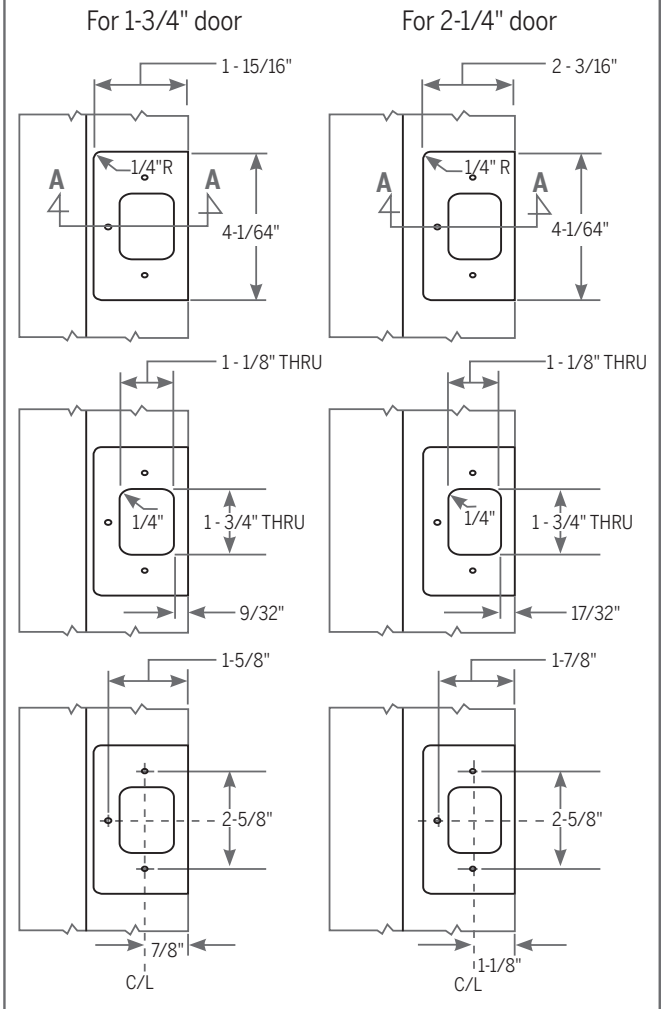


TECHNICAL DETAILS: 3020 MULTI-POINT LOCK

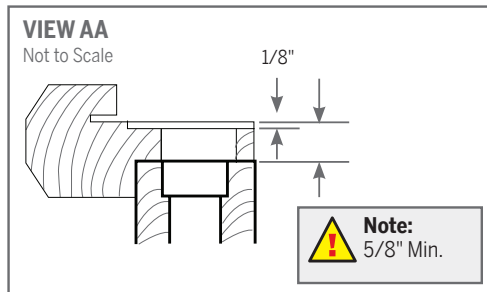
For Passive Panel Of Double Door



ASTRAGAL MORTISE FABRICATION DETAIL

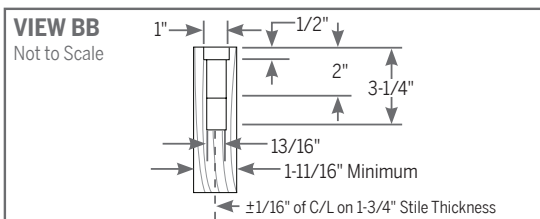
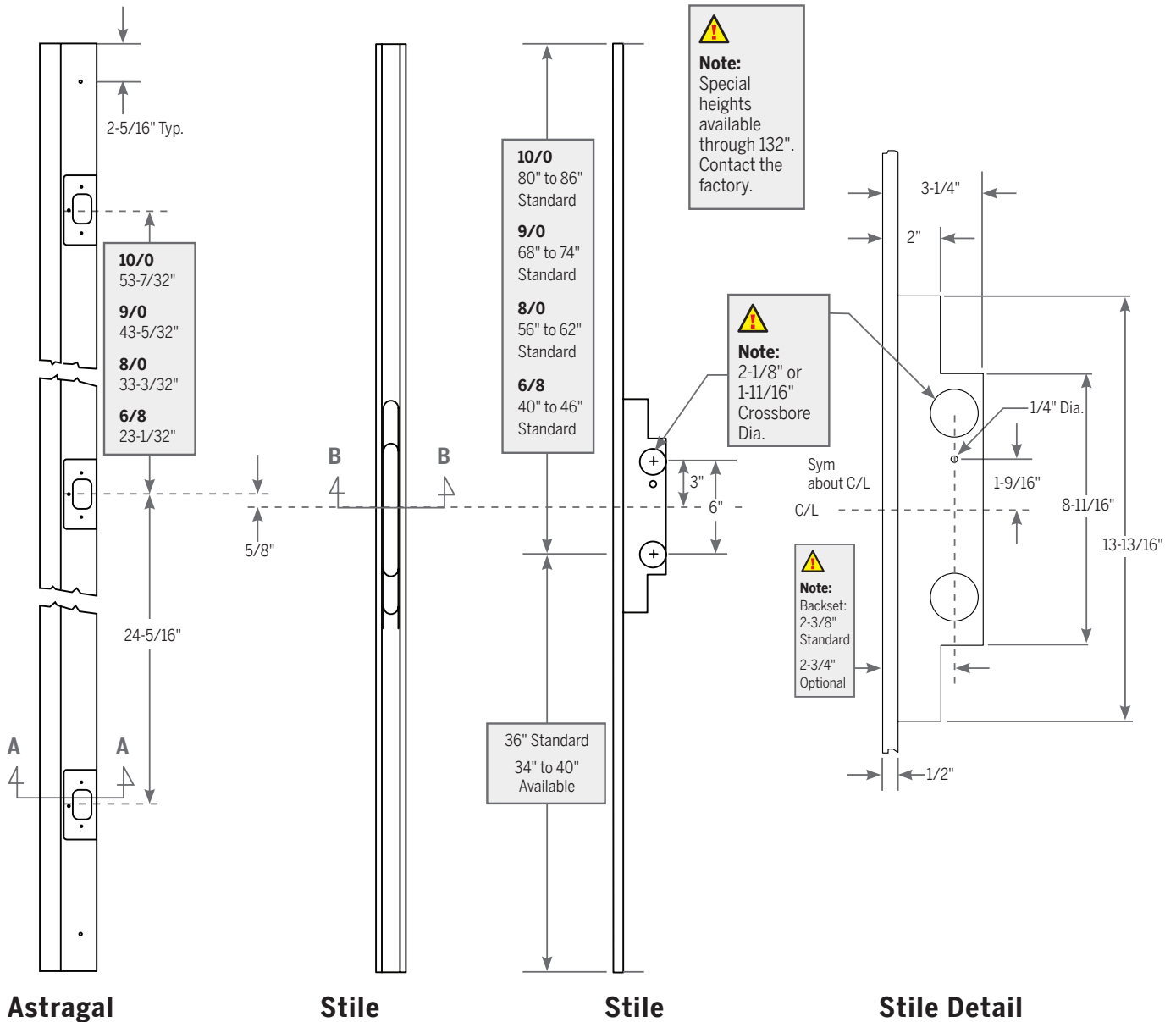


C/L of strike mounting screws are to match with C/L of Lock and door.



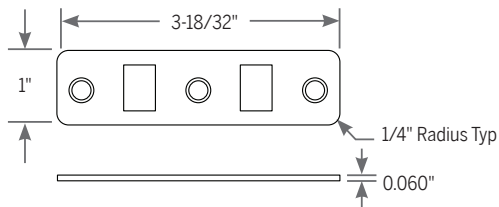
TECHNICAL DETAILS: 3020 MULTI-POINT LOCK

ASTRAGAL AND STILE FABRICATION



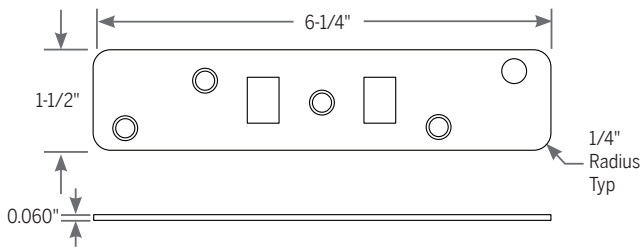
TECHNICAL DETAILS: 3020 MULTI-POINT LOCK

STANDARD HEAD AND SILL KEEPER



HIGH PERFORMANCE HEAD AND SILL KEEPER

For use when using both the 3020 and 3500 Locks together



FINISHES

Face Plate Finish:

 Victorian Bronze

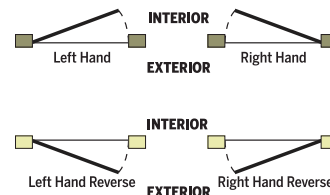
Strike Plate Finishes:

 Victorian Bronze

 Satin Stainless Steel

 Bright Brass

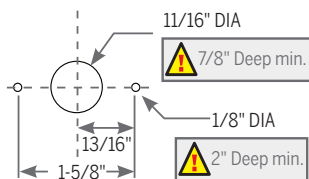
HANDING



KEEPER HOLE FABRICATION

Note: The keepers can be surface applied or mortised in, depending on the application.

Standard Keeper



High Performance Keeper

